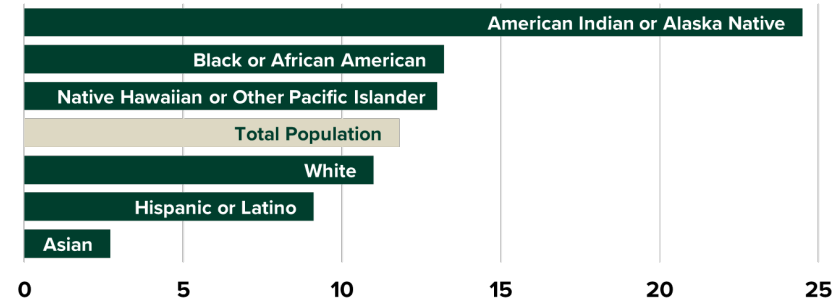


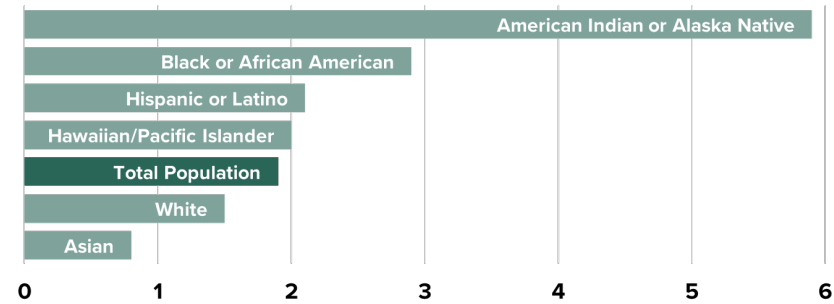
## WHAT DOES AN EQUITABLE TRANSPORTATION SYSTEM LOOK LIKE?

A critical part of developing the Comprehensive Safety Action Plan is identifying and addressing any gaps in service, access, or use of the community's transportation system by disproportionately impacted populations.

2018 Roadway Fatalities per 100,000 Population by Race, U.S.



2018 Pedestrian Fatalities per 100,000 Population by Race, U.S.



Through the development of this plan, project team members will assess existing crash data for the city of Waverly and overlay that information with where socially vulnerable populations, such as low to moderate income, older adults and children, and/or physically or mentally disabled individuals, live in the community.

The final plan will address any identified gaps or threats to these populations and will recommend actions and policies the City can adopt to improve transportation accessibility, use, and safety for all residents of Waverly.

For questions about this project, please contact **Stephanie Fisher** with the City of Waverly at **(402) 786-2312** or Project Manager **Pat Byrd** with JEO Consulting Group at **pbyrd@jeo.com**.

## ADVISORY TEAM

To ensure community values are represented throughout the development of the plan, an Advisory Team has been assembled by the City for this project. This team will meet frequently with project team members to discuss plan updates and progress.

**Stephanie Fisher**  
City Administrator  
City of Waverly

**Tracey Whyman**  
Public Works Director  
City of Waverly

**Shayna Murrell**  
Parks & Recreation Director  
City of Waverly

**Abbey Pascoe**  
Council President  
City of Waverly

**Kris Bohac**  
Planning Commission Chair  
City of Waverly

**Ben Houchin**  
Chief Deputy Sheriff  
Lancaster County

**Robin Hoffman**  
Emergency Services Coordinator  
City of Waverly

**Cory Worrell**  
Superintendent  
District 145



# City of Waverly

# Comprehensive Safety Action Plan



At the beginning of 2024, the City initiated the development of a Safe Streets for All (SS4A) Safety Action Plan for the community of Waverly, Nebraska. This project will develop a safety action plan that aims to eliminate fatal crashes and dramatically reduce severe injury crashes for all users of Waverly's highway, street, sidewalk, and trail transportation network.

The outcome of this plan will provide an overview of the following:

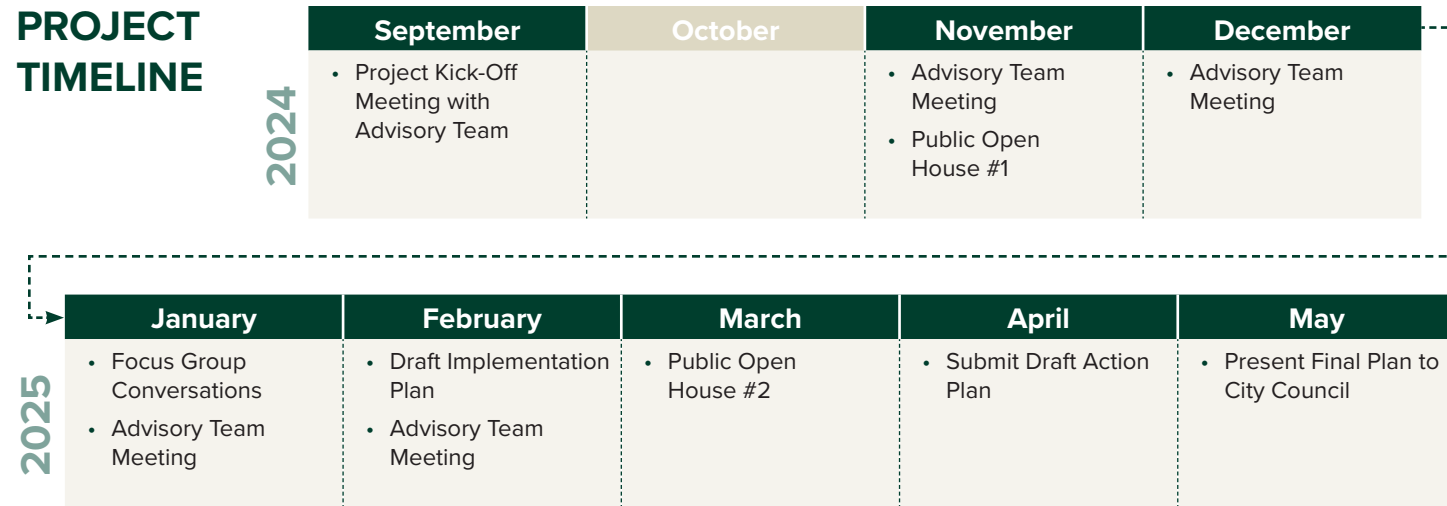
- Historical crash data for the city of Waverly
- Development of applicable countermeasures
- Equitable transportation access and use solutions
- Focused pedestrian/bicycle improvements

Where have you experienced safety risks or concerns in the city of Waverly? Complete the online project survey to share your safety feedback, concerns, and priorities with the City as they continue to develop the Comprehensive Safety Action Plan.



Scan the QR code at left to access the online survey or visit [forms.office.com/r/M7zaeCaHUw](https://forms.office.com/r/M7zaeCaHUw) to complete a comment form.

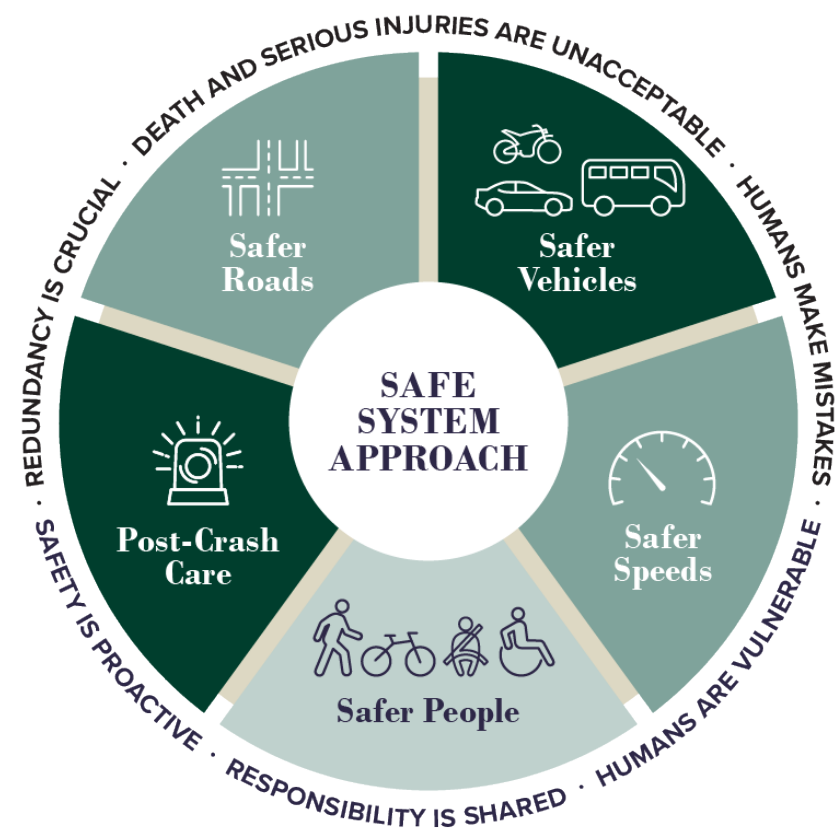
## PROJECT TIMELINE



## WHAT IS A SAFE STREETS FOR ALL (SS4A) - SAFETY ACTION PLAN?

The U.S. Department of Transportation (USDOT) established the Safe Street and Roads for All discretionary program in 2022 with \$5 billion appropriated over the next five years (2022-2026). The City of Waverly successfully obtained SS4A grant dollars in early 2024 and officially kicked off the project in Fall 2024.

The SS4A program follows the Safe System Approach to achieve the goal of zero roadway deaths and reduce severe injury crashes in a community.



## PRINCIPLES OF A SAFE SYSTEM APPROACH

A Safe System Approach incorporates the following principles:

- 1** Death and Serious Injuries are Unacceptable
- 2** Humans Make Mistakes
- 3** Humans Are Vulnerable
- 4** Responsibility is Shared
- 5** Safety is Proactive
- 6** Redundancy is Crucial

## OBJECTIVES OF A SAFE SYSTEM APPROACH

The Safe System Approach Principles also complement five critical objectives that will be achieved through the adoption of Waverly's Comprehensive Safety Action Plan:

### Safer Vehicles

Expand Waverly's availability of vehicle systems and features that help to prevent crashes and minimize the impact of crashes on both occupants and non-occupants.

### Safer Speeds

Promote safer speeds on all Waverly streets through a combination of thoughtful, equitable, context-appropriate roadway design, appropriate speed-limit setting, targeted education, outreach campaigns, and enforcement.

### Safer People

Encourage safe, responsible driving and behavior by people who use Waverly's roads and create conditions that prioritize their ability to reach their destination unharmed.

### Post-Crash Care

Enhance the survivability of crashes through expedient access to emergency medical care, while creating a safe working environment for vital first responders and preventing secondary crashes through robust traffic incident management practices.

### Safer Roads

Design roadway environments in Waverly to mitigate human mistakes and account for injury tolerances, to encourage safer behaviors, and to facilitate safe travel by the most vulnerable users in the community.

## THE NEED FOR SAFER STREETS

A total of 42,939 people died in motor vehicle crashes in 2021. These deaths occurred in 39,508 crashes involving 61,332 motor vehicles. This was a 10% increase in deaths compared with 2020, according to the Insurance Institute for Highway Safety (IIHS) and the Highway Loss Data Institute (HLDI).

Traffic crashes continue to be a leading cause of death for teenagers in America, and disproportionately impact people who are Black, American Indian, or live in rural communities.

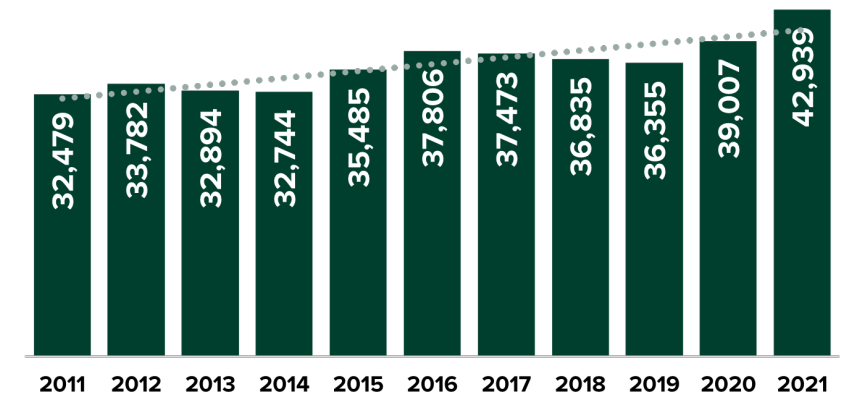
**39,508** Crashes

**42,939** Deaths

**10%** Increase in Deaths

Data from 2021. Insurance Institute for Highway Safety (IIHS) and the Highway Loss Data Institute (HLDI)

Fatal Motor Vehicle Crashes 2011-2020, U.S.



Motor Vehicle Crash Deaths by Type 2011-2020, U.S.

